



**TRI-SEAL™**

## **Torque Retention Isolation Sealing Solutions.**

TRI-Seal™ introduces rigid spheres into expandable sealant materials that are used to seal interfaces where load retention and/or separation of dissimilar materials are important.

[triseal.llproducts.com](http://triseal.llproducts.com)

## Sealing, Isolation, and Torque Retention in One.

TRI-Seal™ simultaneously addresses torque retention, isolation at dissimilar material interfaces, and sealing against water, air, and dust intrusion. Non-conductive alumina spheres are used in both dry and tacky versions of the product. Clamp forces between substrates are supported by the rigid alumina spheres for torque retention.

For the dry-to-touch version, the sealing material is thinner than the spheres to ensure contact with the metal. For the tacky version, a thicker seal can be achieved so that the material can flow under clamp load to ensure maximum sealing coverage.



**TRI-SEAL™ combines torque retention, isolation, and sealing.**

### KEY PRODUCT ATTRIBUTES



#### MAINTAIN FASTENER CLAMP FORCES

Rigid spheres provide a direct load path regardless of sealant expansion.



#### PROMOTE LIGHTWEIGHTING

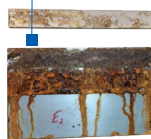
Allows the combination of dissimilar metals while providing a barrier to prevent corrosion by galvanic resistance.



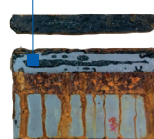
#### ROBUST SEALING AGAINST WATER, AIR & DUST

Ensures robust sealing against small capillary paths common in threads, joints, and line-to-line conditions.

**WITHOUT TRI-SEAL™**  
**Significant Corrosion**



**WITH TRI-SEAL™**  
**Protected from Corrosion**



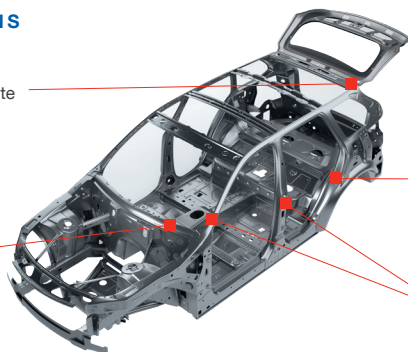
### APPLICATIONS



Liftgate / Tailgate Hinges



Hood Hinges & Latches



Bolted & Riveted Attachments



Door Hinges / Strikers



Scan for disclaimer

triseal.llproducts.com